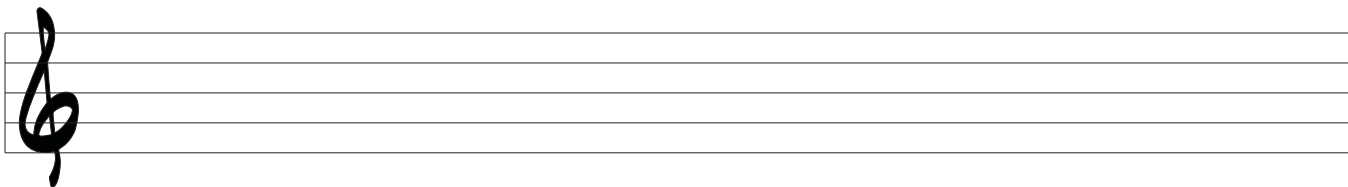
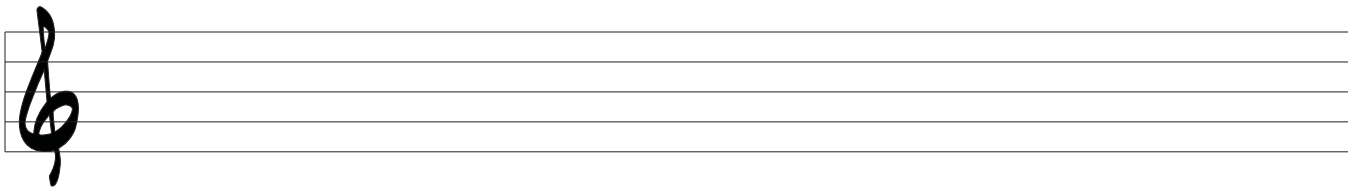
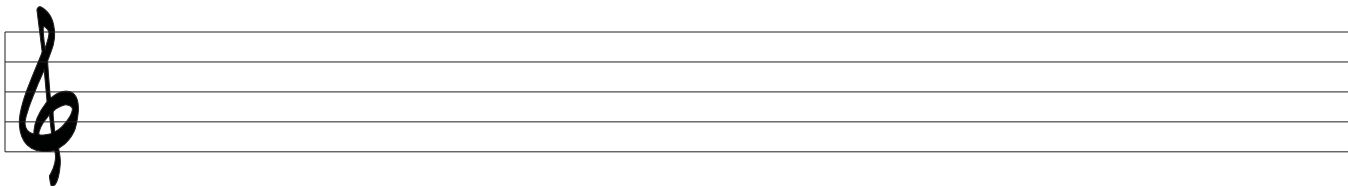
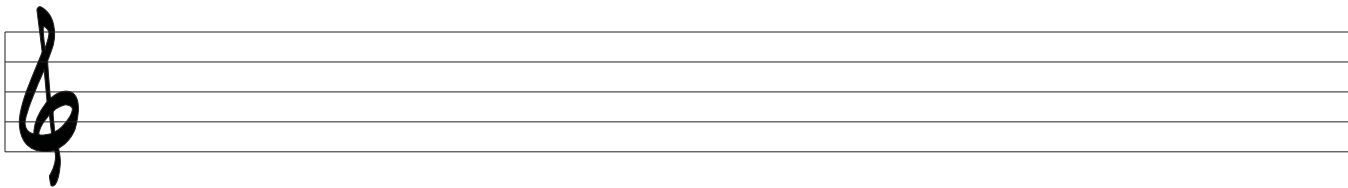
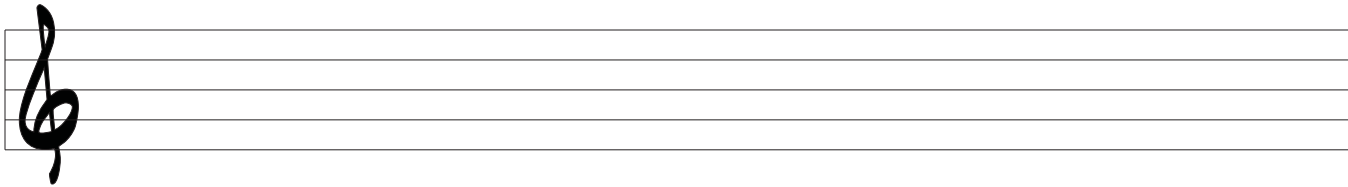
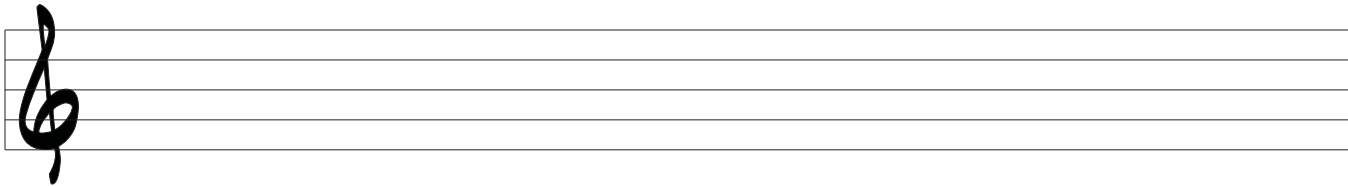
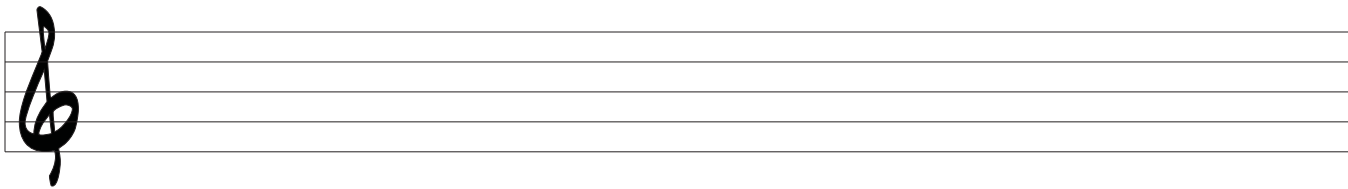


OVERTURE

music

OVERTURE

music



OVERTURE

music

A musical staff consisting of two five-line staves. The top staff begins with a treble clef, and the bottom staff begins with a bass clef. The staves are otherwise empty.

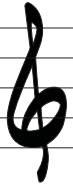
A musical staff consisting of two five-line staves. The top staff begins with a treble clef, and the bottom staff begins with a bass clef. The staves are otherwise empty.

A musical staff consisting of two five-line staves. The top staff begins with a treble clef, and the bottom staff begins with a bass clef. The staves are otherwise empty.

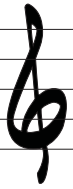
A musical staff consisting of two five-line staves. The top staff begins with a treble clef, and the bottom staff begins with a bass clef. The staves are otherwise empty.

OVERTURE

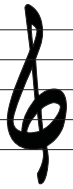
music



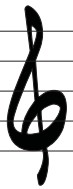
T
A
B



T
A
B



T
A
B



T
A
B

OVERTURE

music

T
A
B

T
A
B

T
A
B

T
A
B

T
A
B

T
A
B

T
A
B

T
A
B

T
A
B

T
A
B

T
A
B

T
A
B

T
A
B

T
A
B

T
A
B